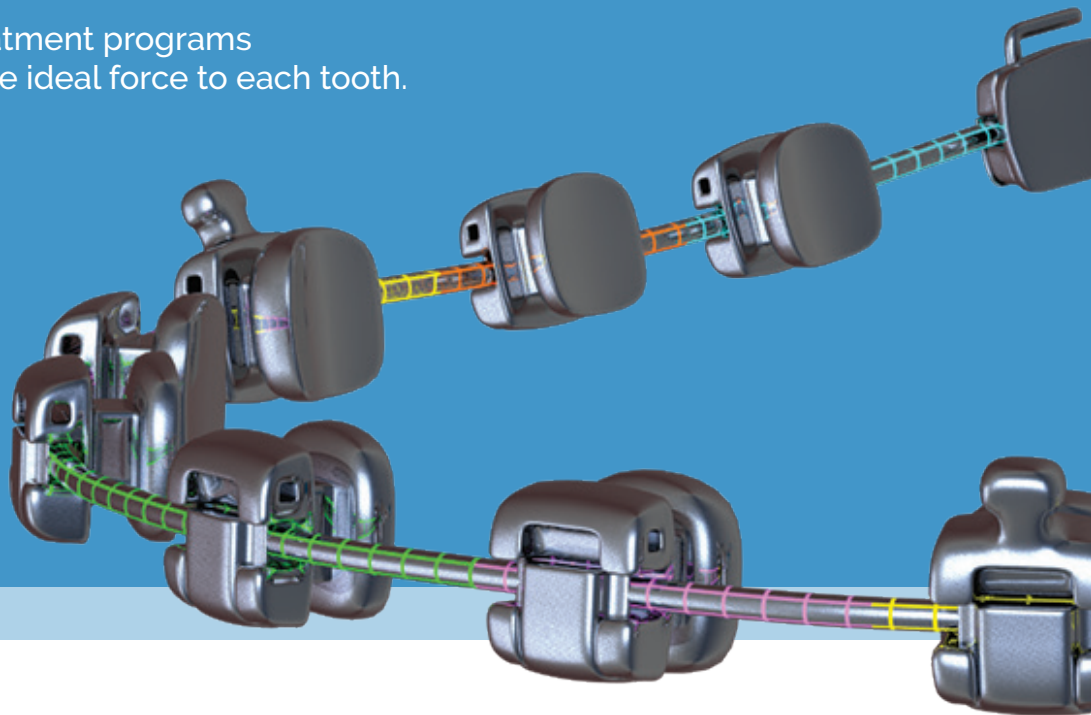


TWO WIRES INSTEAD OF FOUR



Introducing SmartArch,[™] designed to allow clinicians to move into a finishing wire after just two archwires.

The patented laser treatment programs SmartArch to deliver the ideal force to each tooth.



NEW 

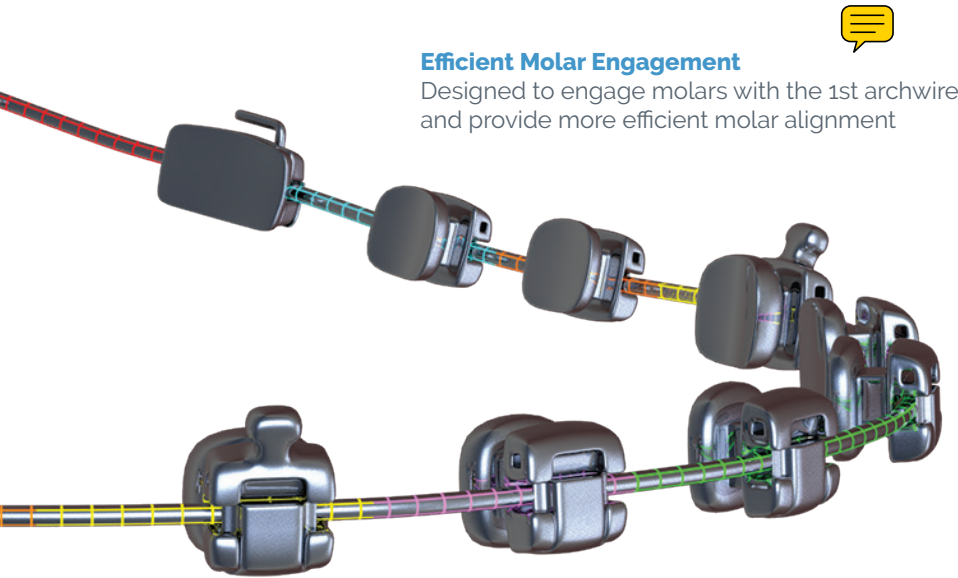
SMARTARCH[™]

Laser Engineered CuNiTi

NEW SMARTARCH™

Laser Engineered CuNiTi

Fewer Wire Changes Ideal Force for Each Tooth



Efficient Molar Engagement

Designed to engage molars with the 1st archwire and provide more efficient molar alignment

7 Distinct Force Zones

Programed to deliver the ideal force to each individual tooth and equalize pressure along the PDL

Reduced Friction

Laser processing reduces friction between wire and bracket surfaces, promoting overall treatment efficiency

Less Wire Disengagement

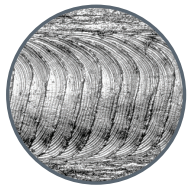
Increased posterior stiffness designed to reduce likelihood of disengagement from buccal tubes and may reduce associated emergency appointments

Computer Engineered

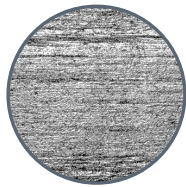
Engineered using finite-element-analysis, the SmartArch design accounts for variations in inter-bracket distance, root size, and the root-to-crown relationship

The Science Behind SmartArch

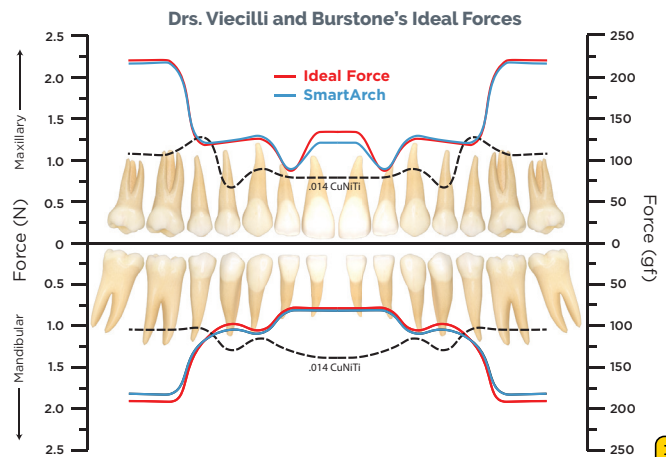
A patented, pulsating laser programs SmartArch to deliver forces closely matching Drs. Viecilli and Burstone's established ideals. By applying ideal forces SmartArch promotes efficient tooth movement and may reduce overall treatment time.



SmartArch CuNiTi
200X



Standard CuNiTi
200X



Drs. Viecilli and Burstone utilized finite-element-analysis (FEA) to establish the ideal force load for each individual tooth

To learn more, contact your Ormco representative at 800.854.1741